

RiskMAP

Increasing Resilience Together



Mitigation Planning

Steve Greene, Mitigation Planner, FEMA Region V

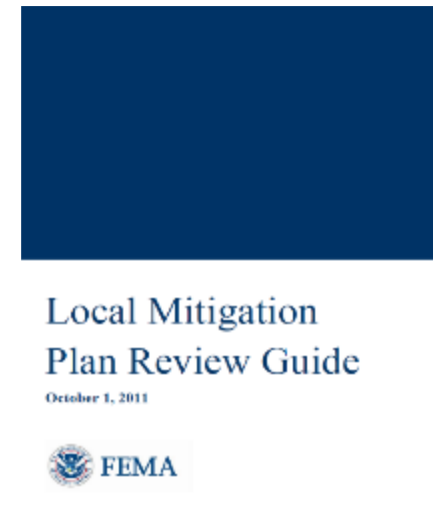
June 5, 2018



FEMA

What is a Mitigation Plan?

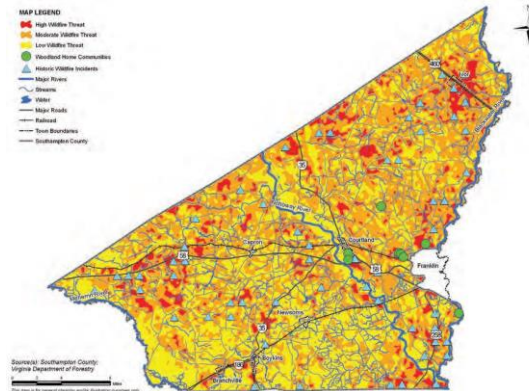
- ▶ **Process to identify policies and actions that can be implemented over the long term to reduce risk and future losses from hazards.**
- ▶ **Types of Plans (Local, State, and Tribal)**
- ▶ **Disaster Mitigation Act of 2000**
- ▶ **Title 44 Code of Federal Regulations § 201.6**



Components of a Mitigation Plan

- ▶ **Planning Process**
- ▶ **Risk Assessment**
- ▶ **Mitigation Strategy**

- ▶ **Plan Maintenance**



Benefits of a Mitigation Plan

- ▶ **Protect public safety and prevent loss of life and injury**
- ▶ **Reduce harm to existing and future development.**
- ▶ **Prevent damage to your community's economic, cultural, and environmental assets.**
- ▶ **Reduce the costs of disaster response and recovery and the exposure to risk for first responders.**
- ▶ **Eligibility to FEMA HMA Programs (PDM, FMA, and HMGP)**

Cuyahoga County's Hazard Mitigation Plan

- ▶ Updated in 2017
- ▶ 59 Jurisdictions Participated
- ▶ Expires on September 19, 2022



Plan Integration

“Given the amount of good information available to building designers, public policymakers and developers, there is no excuse for failing to minimize risk from natural hazards by considering and incorporating protective actions into decisions about where and how communities are planned and built.”

- Julie Rochman, Former President & CEO

Insurance Institute for Business & Home Safety

Plan Integration

- ▶ **Federal regulations require that local hazard mitigation plans describe a process by which local governments incorporate the requirements of the mitigation plan into other planning mechanisms.**
- ▶ **Mitigation Plans are more than just “stand alone” documents.**
- ▶ **Building/Maintaining Relationships.**
- ▶ **The economics make sense—the benefits of avoiding or minimizing risk through safe development practices from the start greatly outweigh the costs of damage and disruption later.**

Opportunities to Integrate Mitigation into Local Planning

- ▶ **Comprehensive/Land Use Plan**
- ▶ **Building Codes/Zoning Ordinances**
- ▶ **Capitol Improvement Plans**
- ▶ **Economic Development Strategies**

